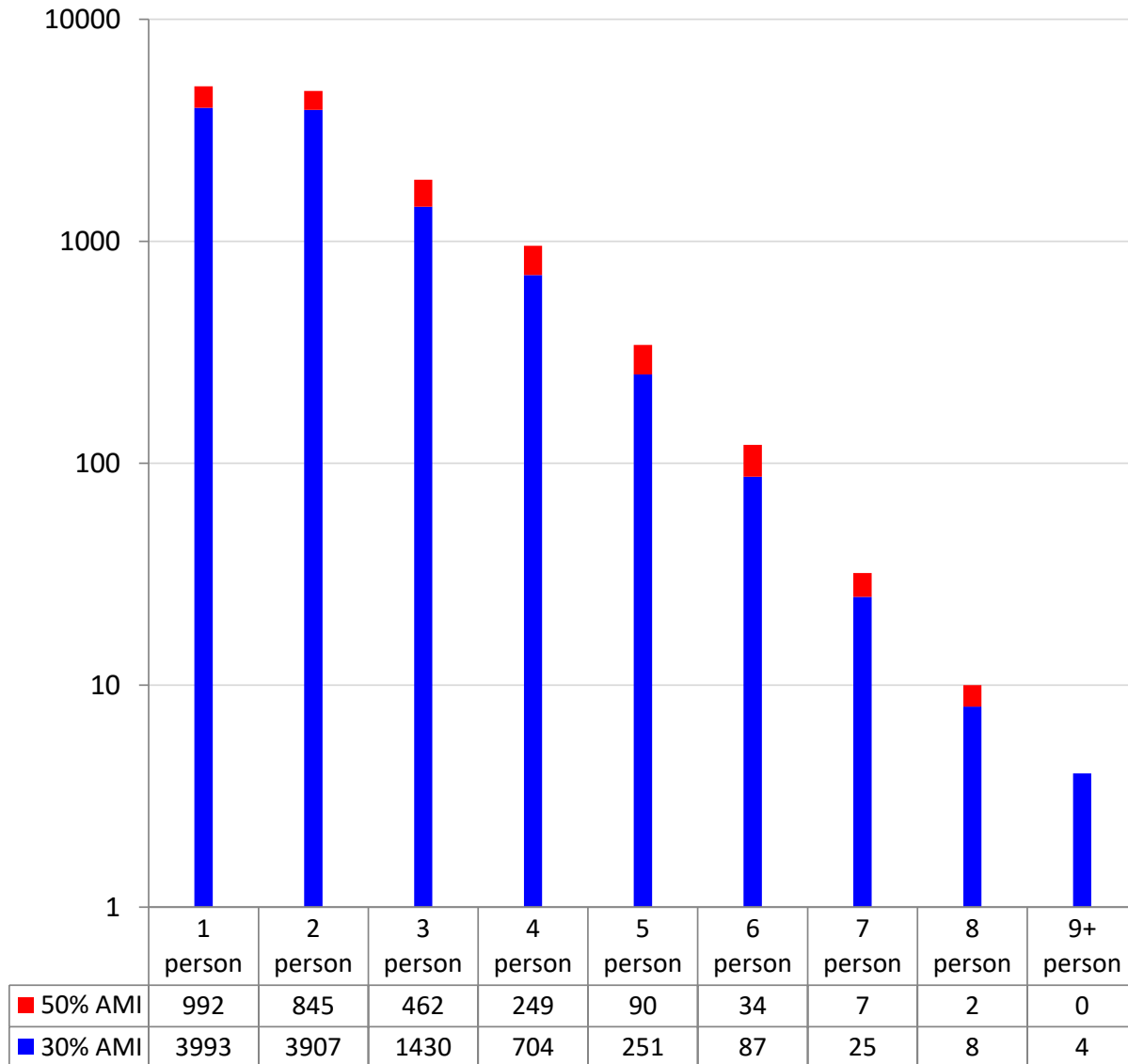


Number of HHs at 30% or 50% AMI by HH size

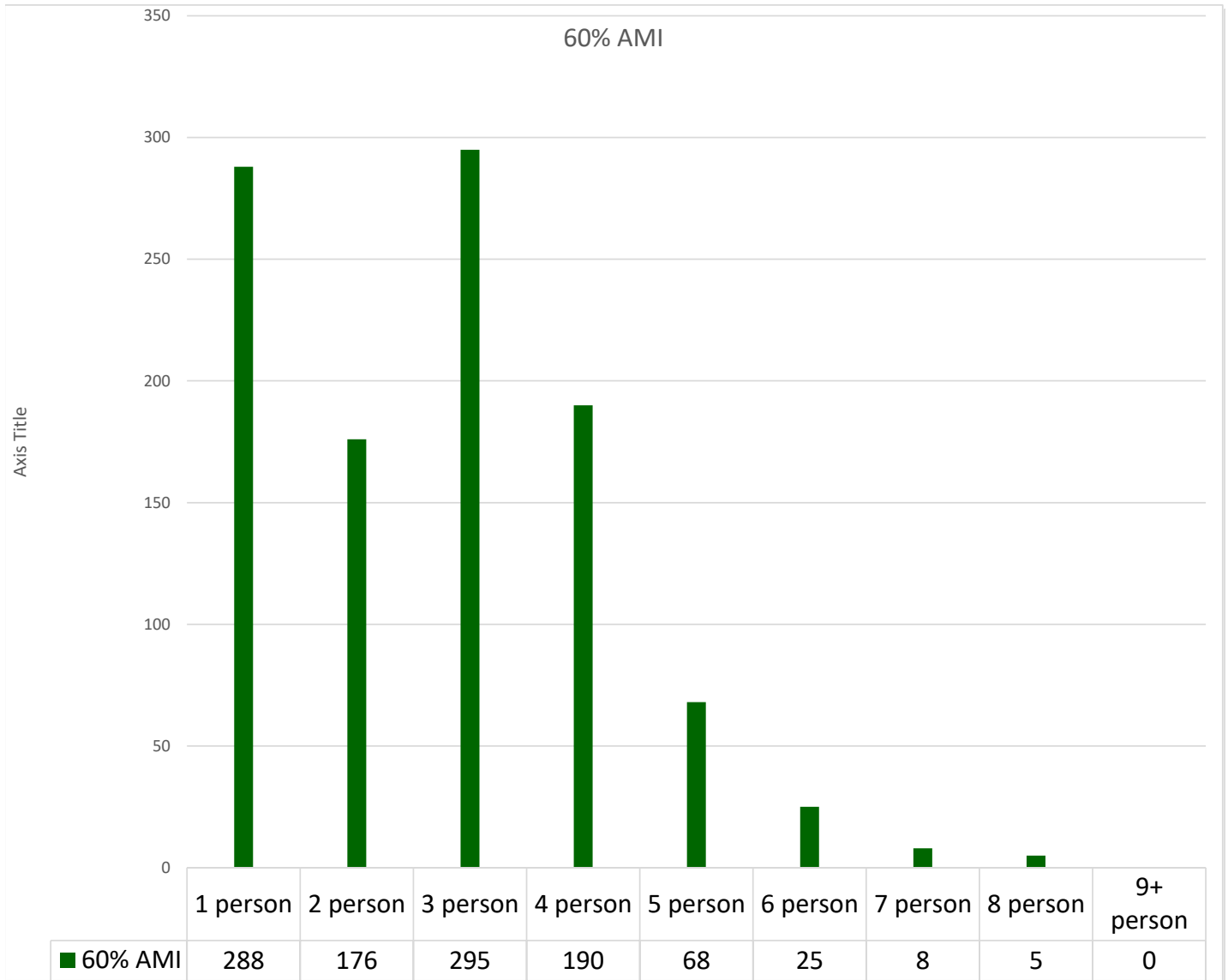
* or County, City, PMSA, or State



NARRATIVE: For a household to be counted, it must have provided its income AND current household size. Income category answers are nearly complete, but historically "bedroom size" was collected rather "household size, so the numbers here represent only a subset of the 52,000 plus households in the system. However, with each annual waitlist update, we now record both bedroom size and household size in the software, so the sample will increase in size fairly rapidly.

Number by HHs in 60% AMI by HH size

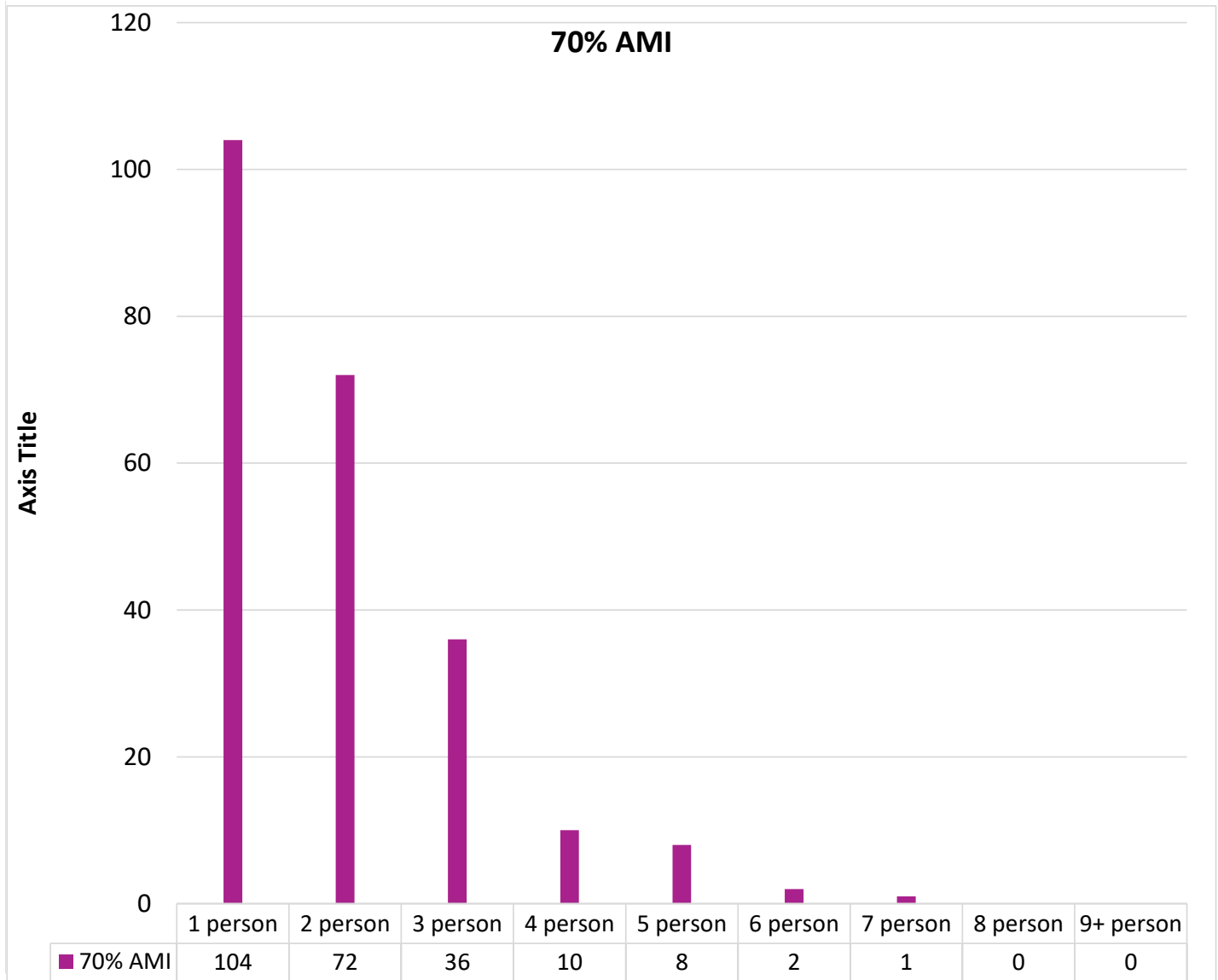
* or County, City, PMSA, or State



NARRATIVE: For a household to be counted, it must have provided its income AND current household size. Income category answers are nearly complete, but historically "bedroom size" was collected rather "household size, so the numbers here represent only a subset of the 52,000 plus households in the system. However, with each annual waitlist update, we now record both bedroom size and household size in the software, so the sample will increase in size fairly rapidly.

Number of HHs in 70% AMI by HH size

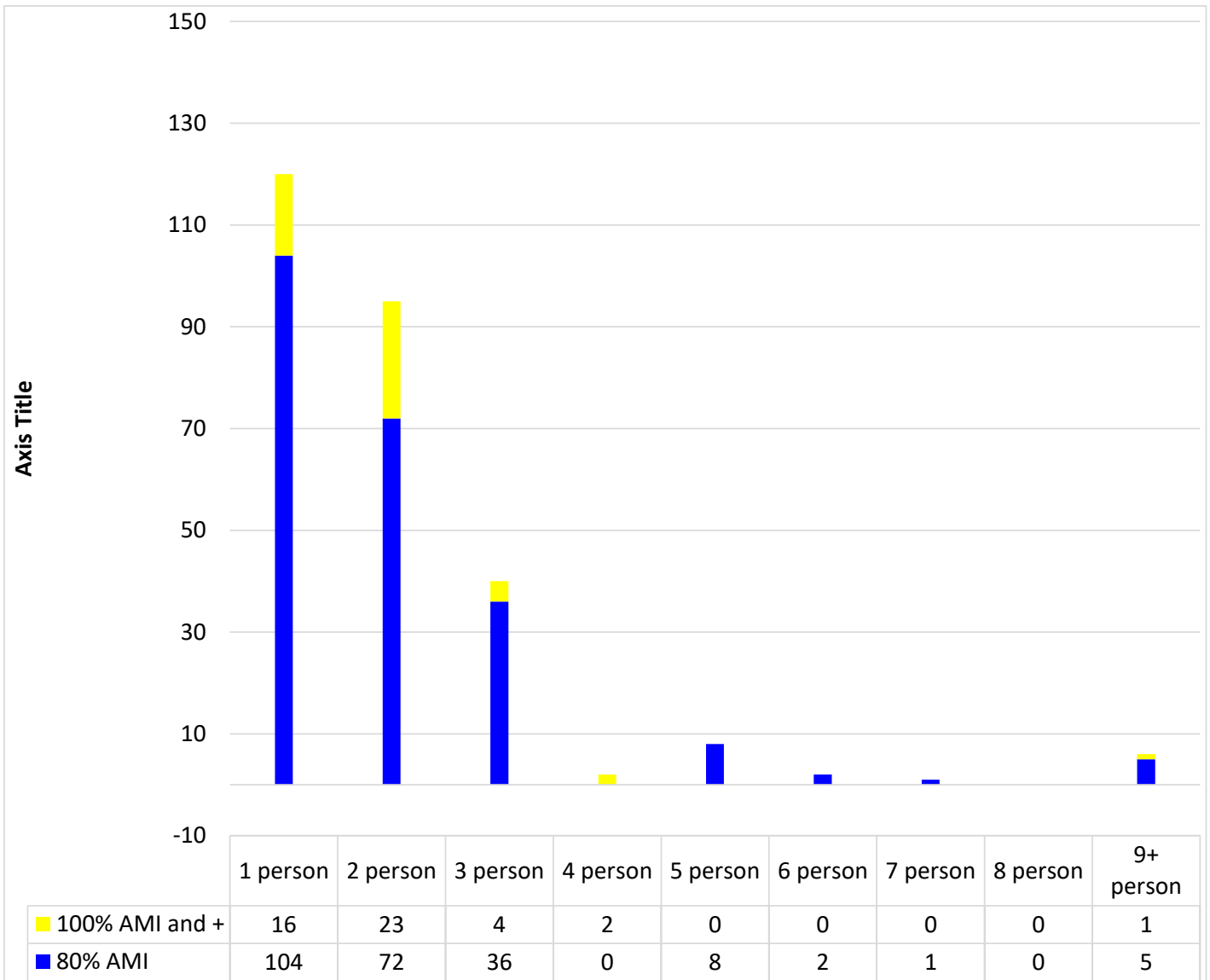
* or County, City, PMSA, or State



NARRATIVE: The largest numbers of households using housingworks are in the 30 and 50% AMI categories (not surprising). HousingsWorks contains higher income units - and therefore higher-income applicants - in cases where a mixed income building contains subsidized, affordable, AND higher-income units.

Number of HHs 80%-100% AMI by HH size

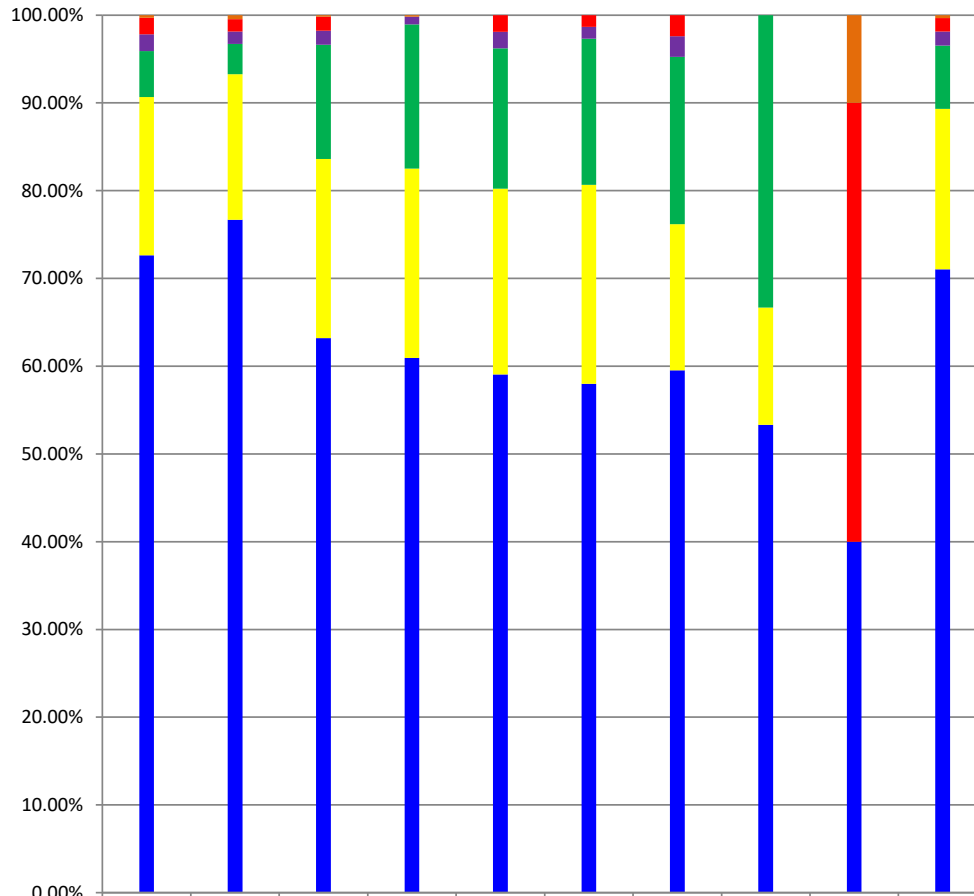
* or County, City, PMSA, or State



NARRATIVE: The largest numbers of households using housingworks are in the 30 and 50% AMI categories (not surprising). HousingsWorks contains higher income units - and therefore higher-income applicants - in cases where a mixed income building contains subsidized, affordable, AND higher-income units.

Percentages of HHs by HH Size, All Income Categories

* or County, City, PMSA, or State



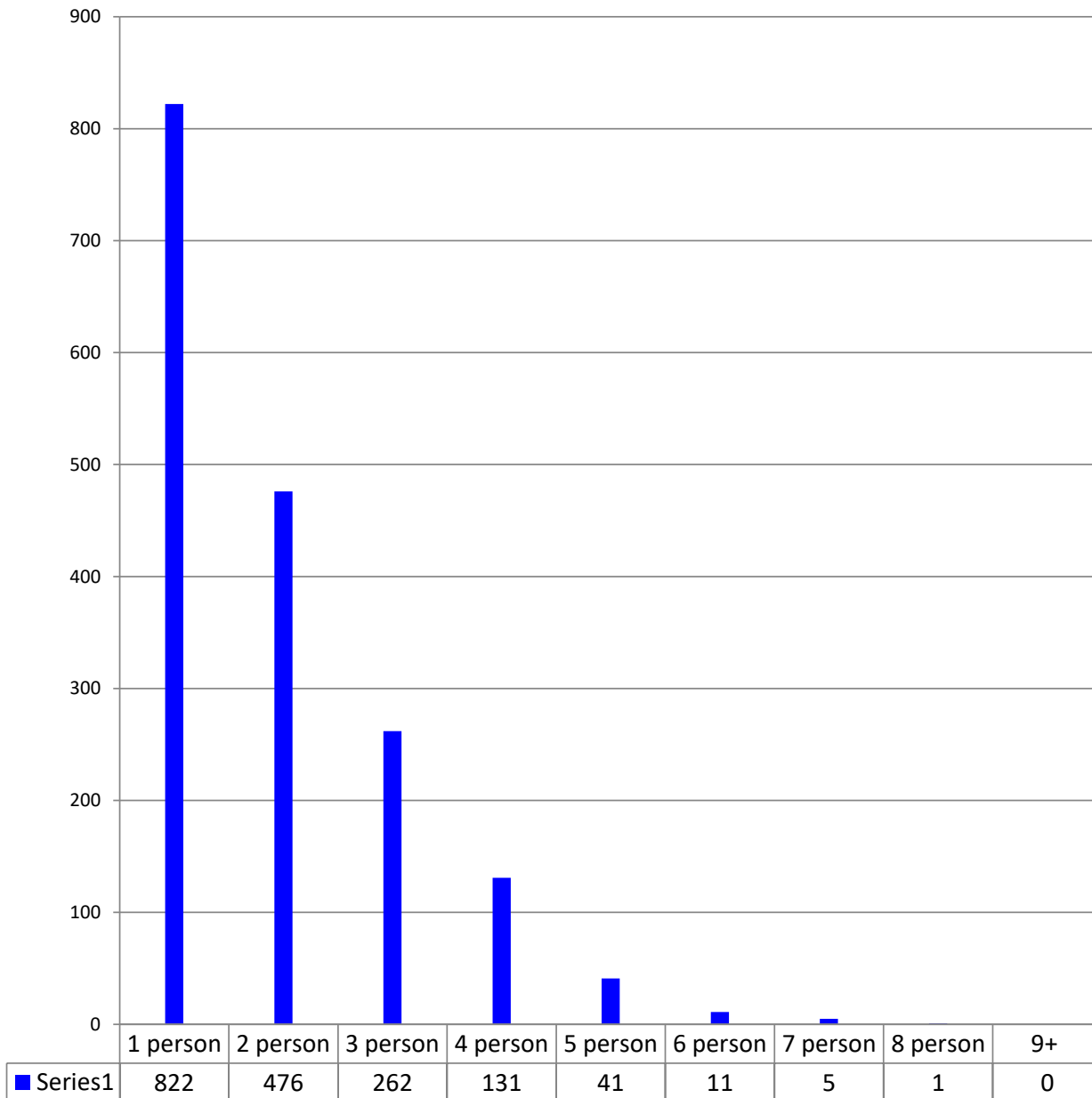
	1 person	2 person	3 person	4 person	5 person	6 person	7 person	8 person	9+ person	HH Size Totals
100% AMI and +	0.29%	0.45%	0.18%	0.17%	0.00%	0.00%	0.00%	0.00%	10.00%	0.31%
80% AMI	1.89%	1.41%	1.59%	0.00%	1.88%	1.33%	2.38%	0.00%	50.00%	1.56%
70% AMI	1.89%	1.41%	1.59%	0.87%	1.88%	1.33%	2.38%	0.00%	0.00%	1.59%
60% AMI	5.24%	3.45%	13.04%	16.45%	16.00%	16.67%	19.05%	33.33%	0.00%	7.20%
50% AMI	18.05%	16.58%	20.42%	21.56%	21.18%	22.67%	16.67%	13.33%	0.00%	18.30%
30% AMI	72.64%	76.68%	63.19%	60.95%	59.06%	58.00%	59.52%	53.33%	40.00%	71.04%

NARRATIVE: The largest numbers of households using housingworks are in the 30 and 50% AMI categories (not surprising). HousingWorks contains higher income units - and therefore higher-income applicants - in cases where a mixed income building contains subsidized, affordable, AND higher-income units.

Applicant Reports

HHs "Currently Homeless" by HH Size

* or County, City, PMSA, or State

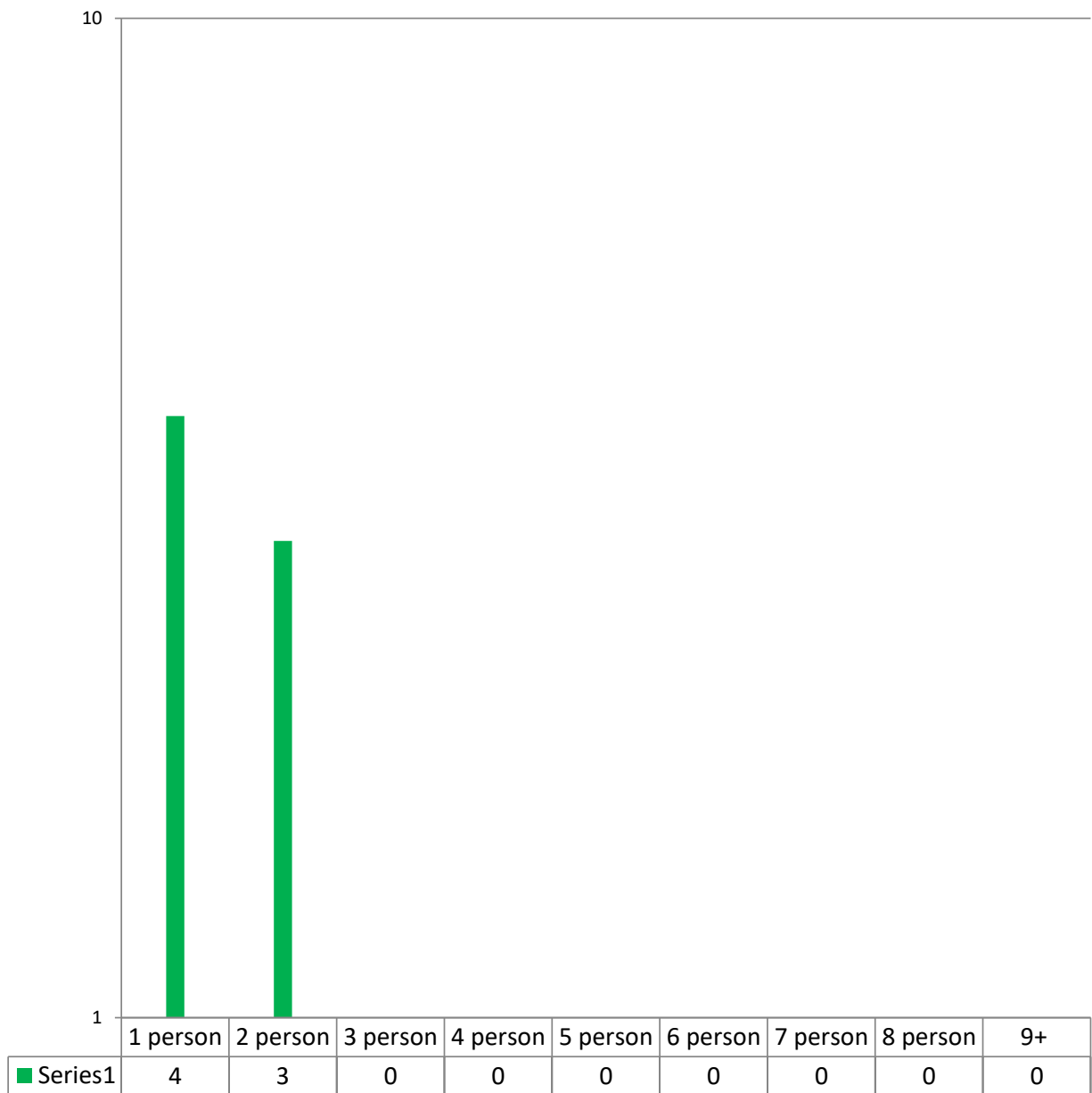


NARRATIVE: For a household to be counted, it must have provided its Housing Status AND current household size. Income category answers are nearly complete, but historically "Housing Status has not been recorded by many advocates or housing providers, so the numbers here represent only a subset of the 52,000 plus households in the system. However, with each annual waitlist update, we now record both bedroom size and household size in the software, so the sample will increase in size fairly rapidly.

HHs "At Imminent Risk" by HH Size

does not include DV applicants

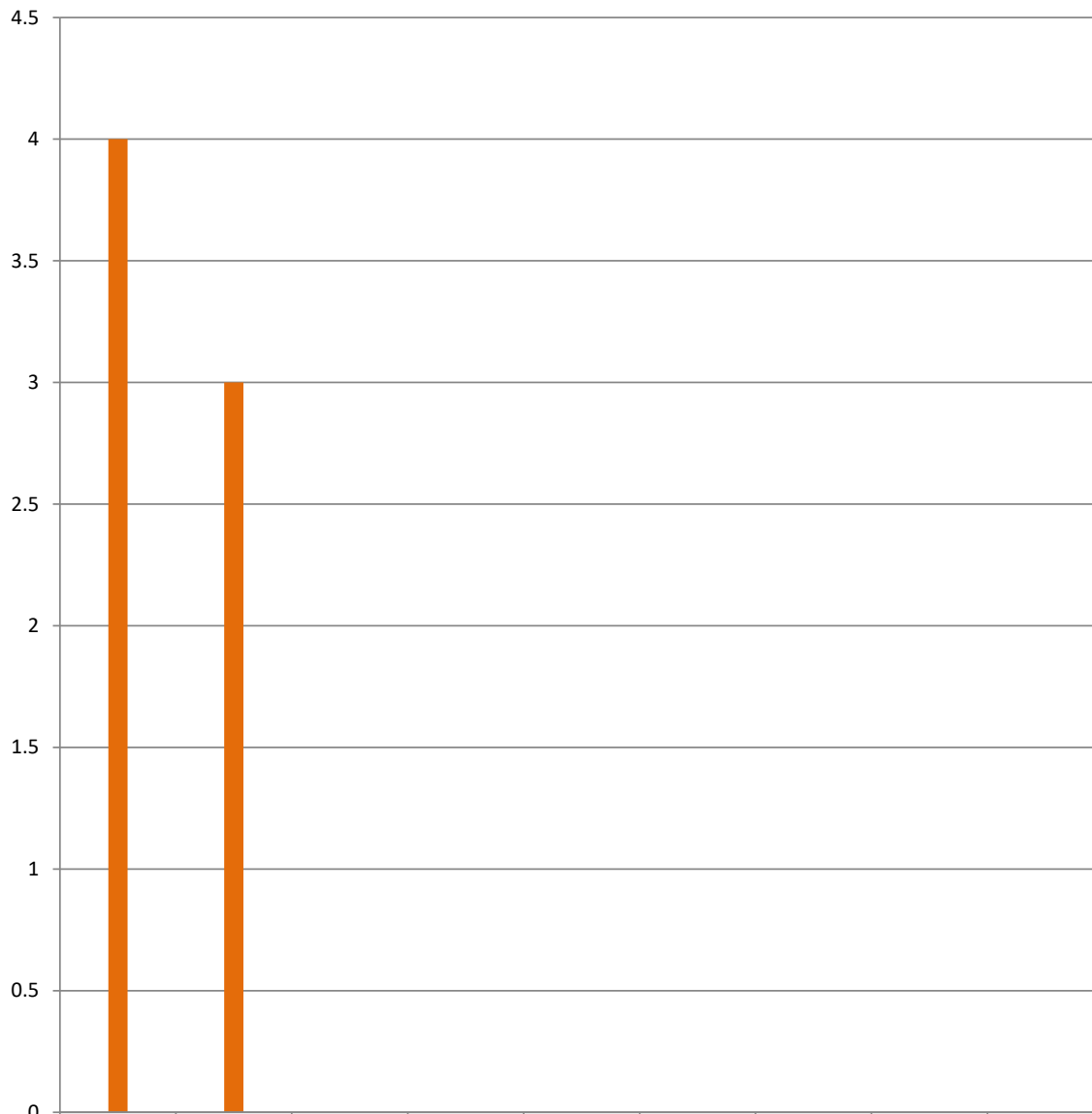
* or County, City, PMSA, or State



NARRATIVE: For a household to be counted, it must have provided its Housing Status AND current household size. Income category answers are nearly complete, but historically "Housing Status has not been recorded by many advocates or housing providers, so the numbers here represent only a subset of the 52,000 plus households in the system. However, with each annual waitlist update, we now record both bedroom size and household size in the software, so the sample will increase in size fairly rapidly.

HHs "Homeless by other Federal Statutes" by HH size

* or County, City, PMSA, or State

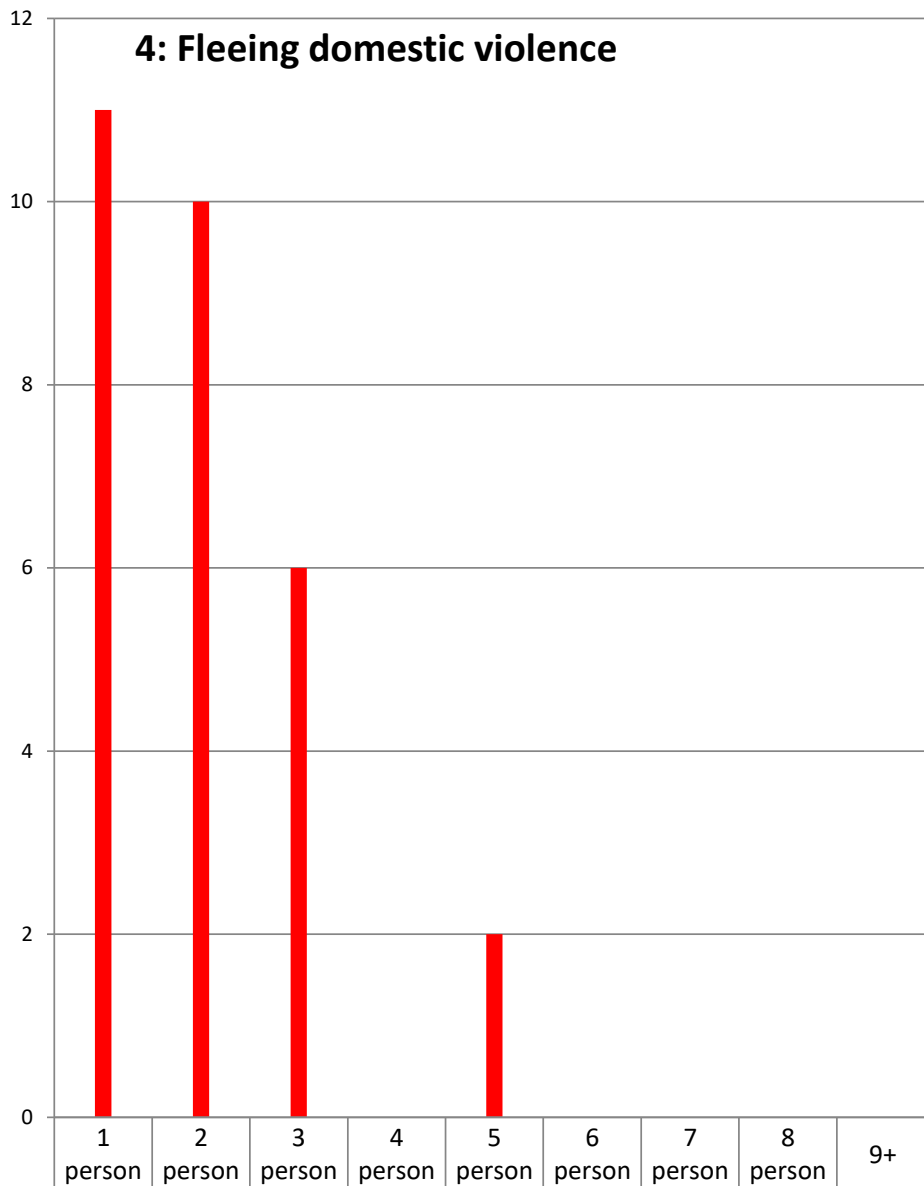


	1 person	2 person	3 person	4 person	5 person	6 person	7 person	8 person	9+
Series1	4	3	0	0	0	0	0	0	0

NARRATIVE: For a household to be counted, it must have provided its Housing Status AND current household size. Income category answers are nearly complete, but historically "Housing Status has not been recorded by many advocates or housing providers, so the numbers here represent only a subset of the 52,000 plus households in the system. However, with each annual waitlist update, we now record both bedroom size and household size in the software, so the sample will increase in size fairly rapidly.

HHs "Fleeing Domestic Violence" by HH Size

* or County, City, PMSA, or State

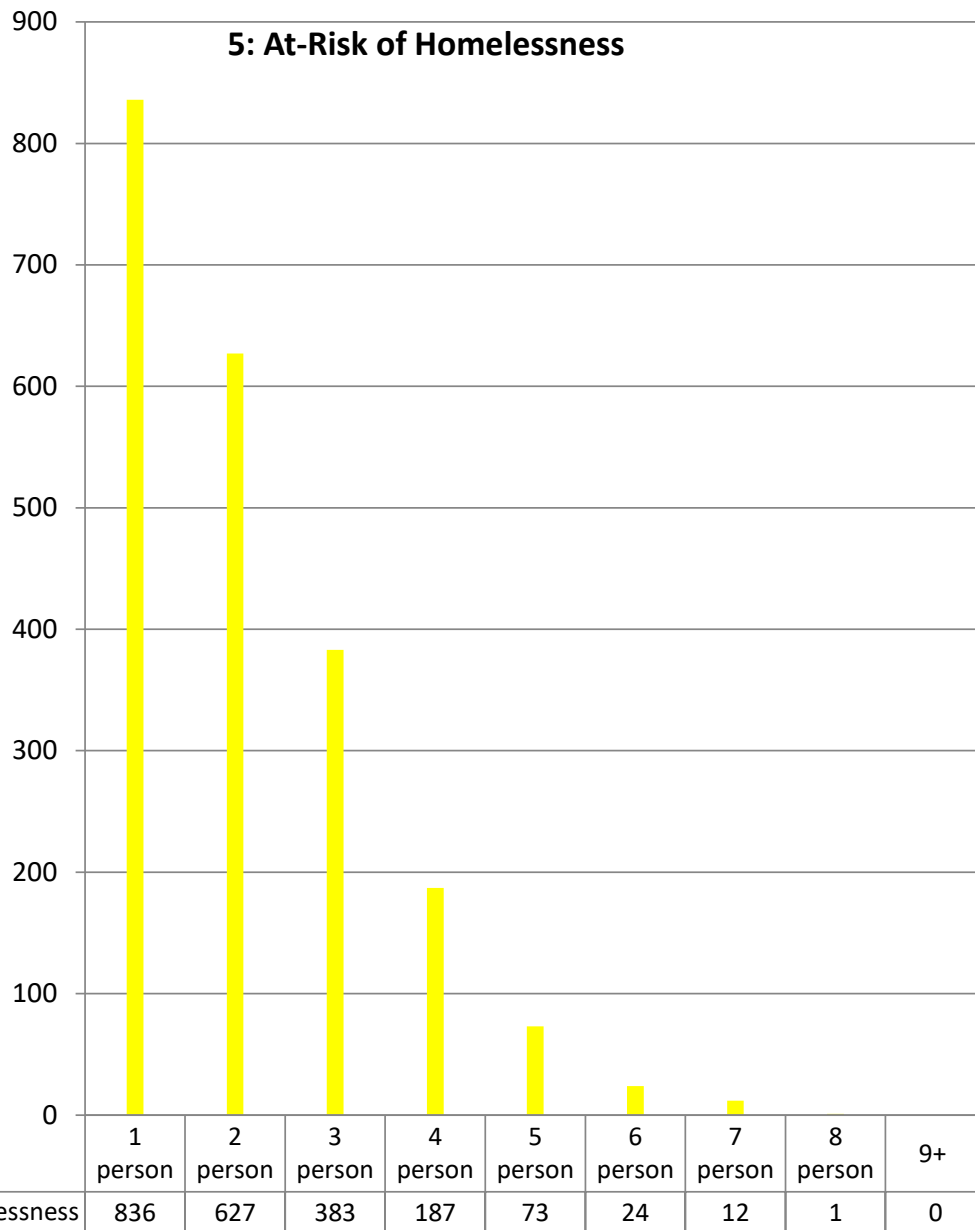


■ 4: Fleeing domestic violence	11	10	6	0	2	0	0	0	0
--------------------------------	----	----	---	---	---	---	---	---	---

NARRATIVE: For a household to be counted, it must have provided its Housing Status AND current household size. Income category answers are nearly complete, but historically "Housing Status has not been recorded by many advocates or housing providers, so the numbers here represent only a subset of the 52,000 plus households in the system. However, with each annual waitlist update, we now record both bedroom size and household size in the software, so the sample will increase in size fairly rapidly.

HHS "At Risk of Homelessness" by HH Size

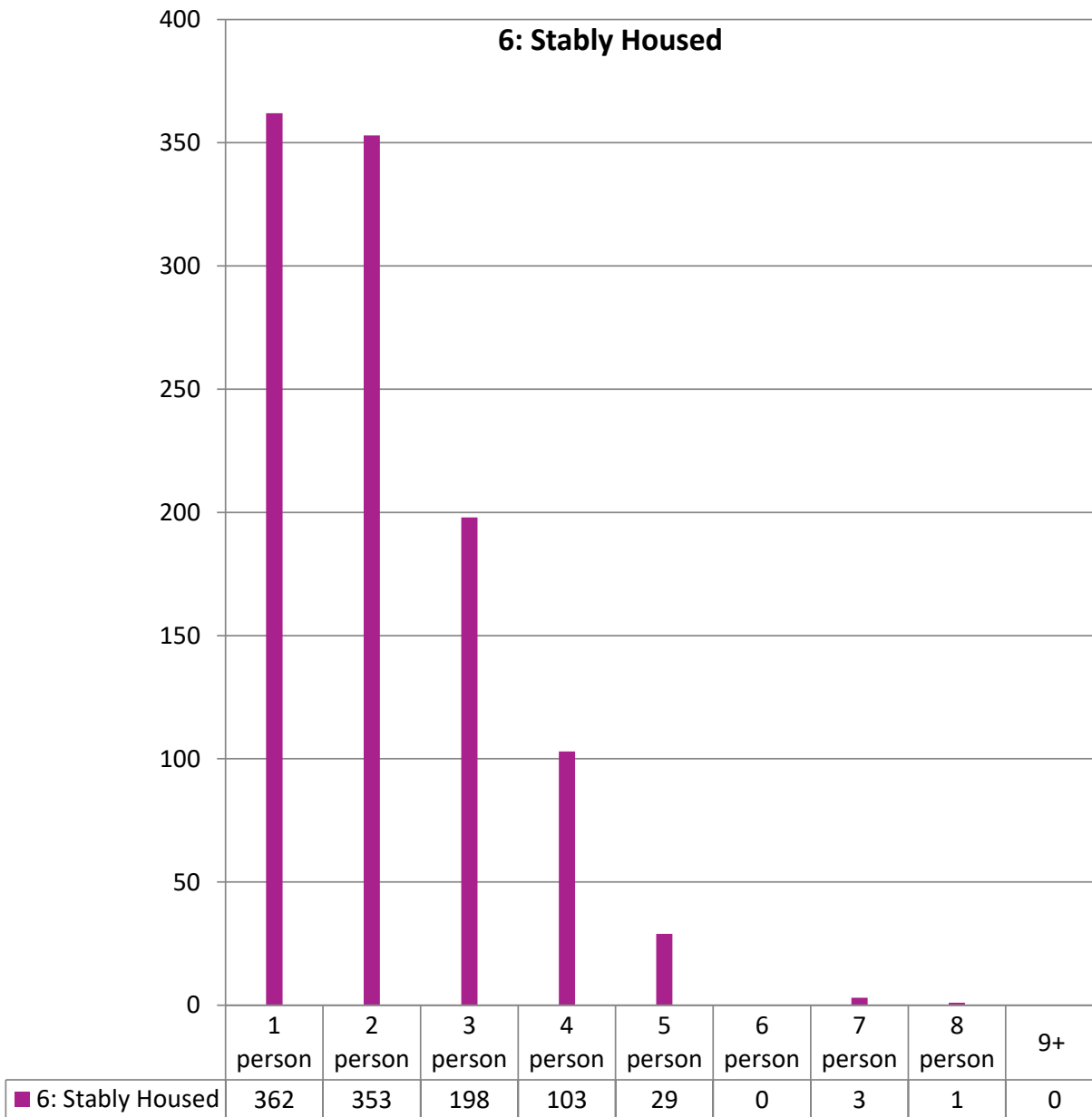
* or County, City, PMSA, or State



NARRATIVE: For a household to be counted, it must have provided its Housing Status AND current household size. Income category answers are nearly complete, but historically "Housing Status has not been recorded by many advocates or housing providers, so the numbers here represent only a subset of the 52,000 plus households in the system. However, with each annual waitlist update, we now record both bedroom size and household size in the software, so the sample will increase in size fairly rapidly.

HHS "Stably Housed but seeking to move" by HH Size

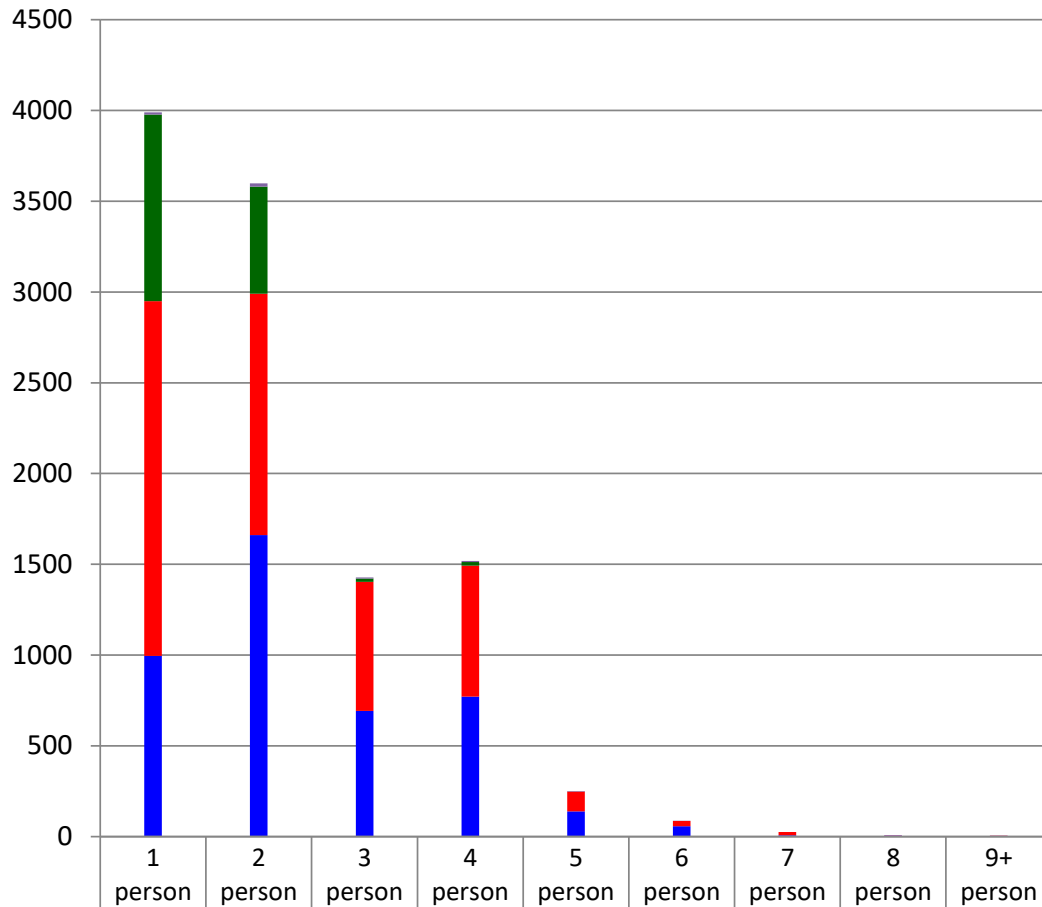
* or County, City, PMSA, or State



NARRATIVE: For a household to be counted, it must have provided its Housing Status AND current household size. Income category answers are nearly complete, but historically "Housing Status has not been recorded by many advocates or housing providers, so the numbers here represent only a subset of the 52,000 plus households in the system. However, with each annual waitlist update, we now record both bedroom size and household size in the software, so the sample will increase in size fairly rapidly.

30% AMI HHs, Showing 'Career Stage'

* or County, City, PMSA, or State

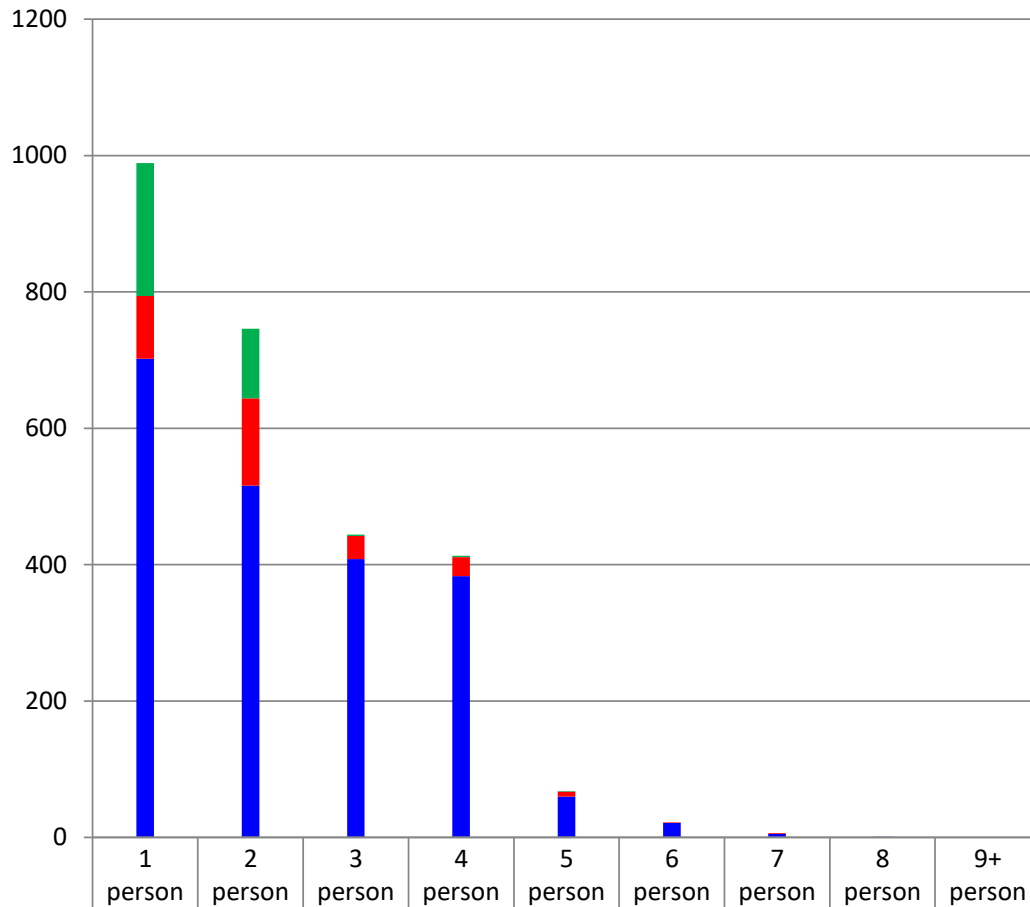


30% FT Student	13	19	7	7	2	1	0	0	0
30% AMI Retired	1027	590	18	19	0	0	0	0	0
30% AMI Unemployed	1955	1329	711	722	110	29	17	2	1
30% AMI Employed	995	1661	692	771	139	57	8	6	4

NARRATIVE: For a household to be counted, it must have provided its income AND current household size and 'Career Status: **Employed, Unemployed, Retired, FT Student**'. Historically "career status" has not been entered into waitlist softwares, so the numbers here represent only a subset of the 52,000 plus households in the system. However, we now record both career status with each annual update, so the sample will increase in size by year's end.

50% AMI HHs, Showing 'Career Stage'

* or County, City, PMSA, or State

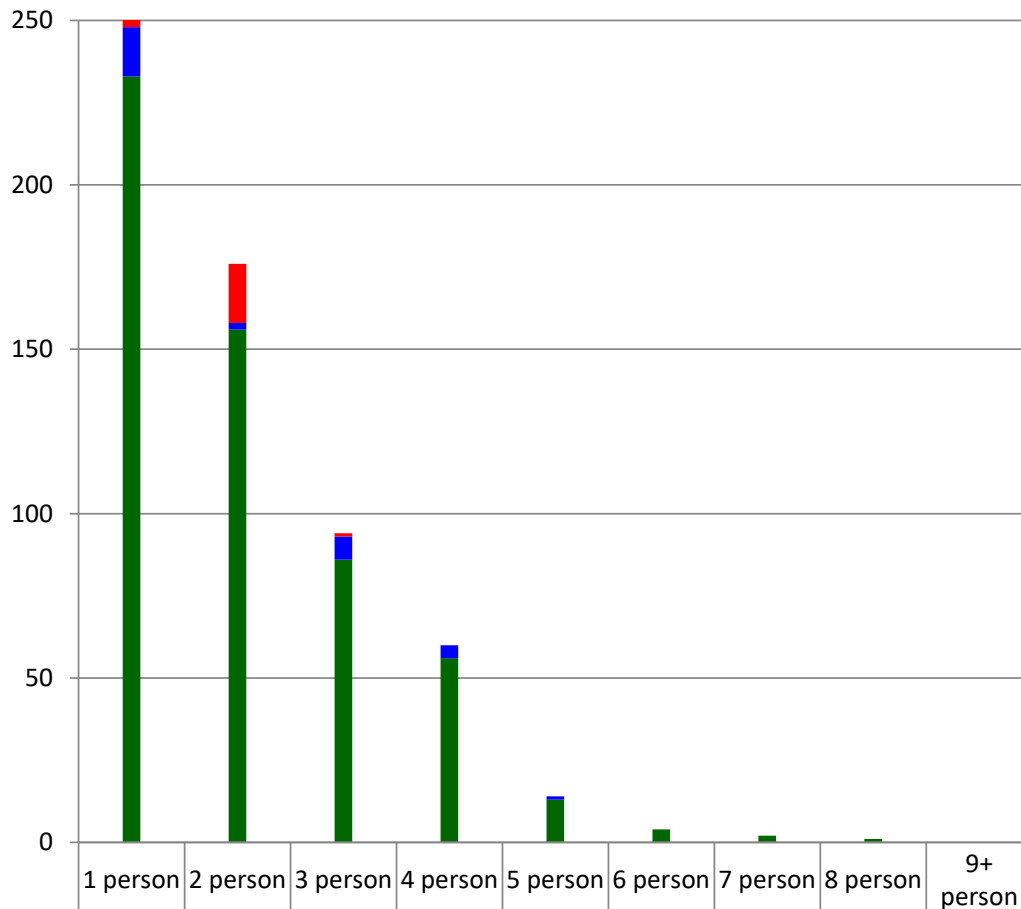


50% AMI FT Student	0	0	0	0	0	0	0	0	0
50% AMI Retired	195	102	2	2	1	0	0	0	0
50% AMI Unemployed	92	128	34	28	7	1	1	0	0
50% AMI Employed	702	516	408	383	60	21	5	1	0

NARRATIVE: For a household to be counted, it must have provided its income AND current household size and 'Career Status: **Employed, Unemployed, Retired, FT Student**'. Historically "career status" has not been entered into waitlist softwares, so the numbers here represent only a subset of the 52,000 plus households in the system. However, we now record both career status with each annual update, so the sample will increase in size by year's end.

60% AMI HHs, Showing "Career Stage"

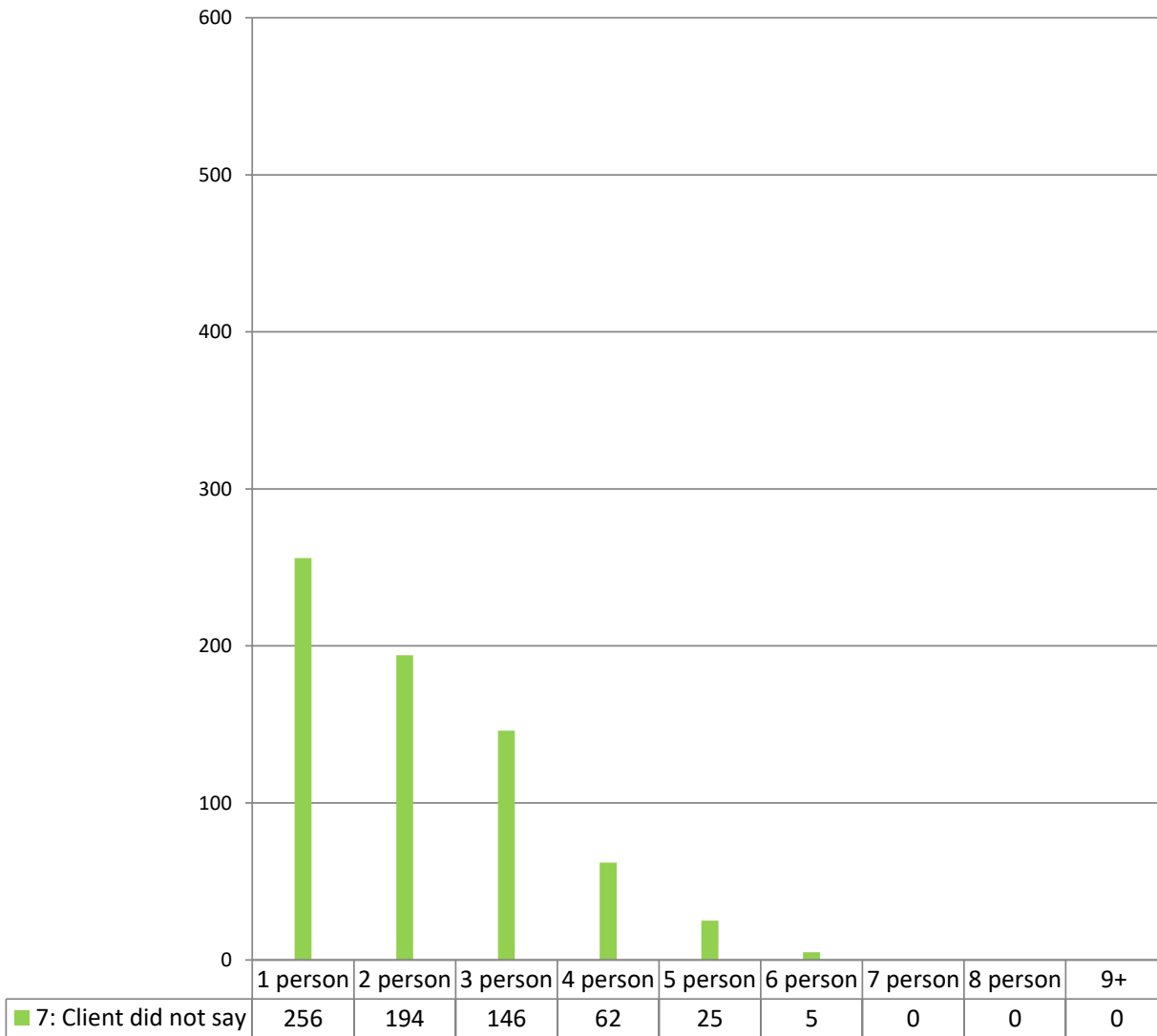
* or County, City, PMSA, or State



	1 person	2 person	3 person	4 person	5 person	6 person	7 person	8 person	9+ person
60% AMI FT Student	0	0	0	0	0	0	0	0	0
60% AMI Retired	40	18	1	0	0	0	0	0	0
60% AMI Unemployed	15	2	7	4	1	0	0	0	0
60% AMI Employed	233	156	86	56	13	4	2	1	0

NARRATIVE: For a household to be counted, it must have provided its income AND current household size and 'Career Status: **Employed, Unemployed, Retired, FT Student**). Historically "career status" has not been entered into waitlist softwares, so the numbers here represent only a subset of the 52,000 plus households in the system. However, we now record both career status with each annual update, so the sample will increase in size by year's end.

HHS "Housing Status not provided", by HH Size



NARRATIVE: For a household to be counted, it must have provided its income AND current household size and 'Career Status: **Employed, Unemployed, Retired, FT Student**). Historically "career status" has not been entered into waitlist softwares, so the numbers here represent only a subset of the 52,000 plus households in the system. However, we now record both career status with each annual update, so the sample will increase in size by year's end.

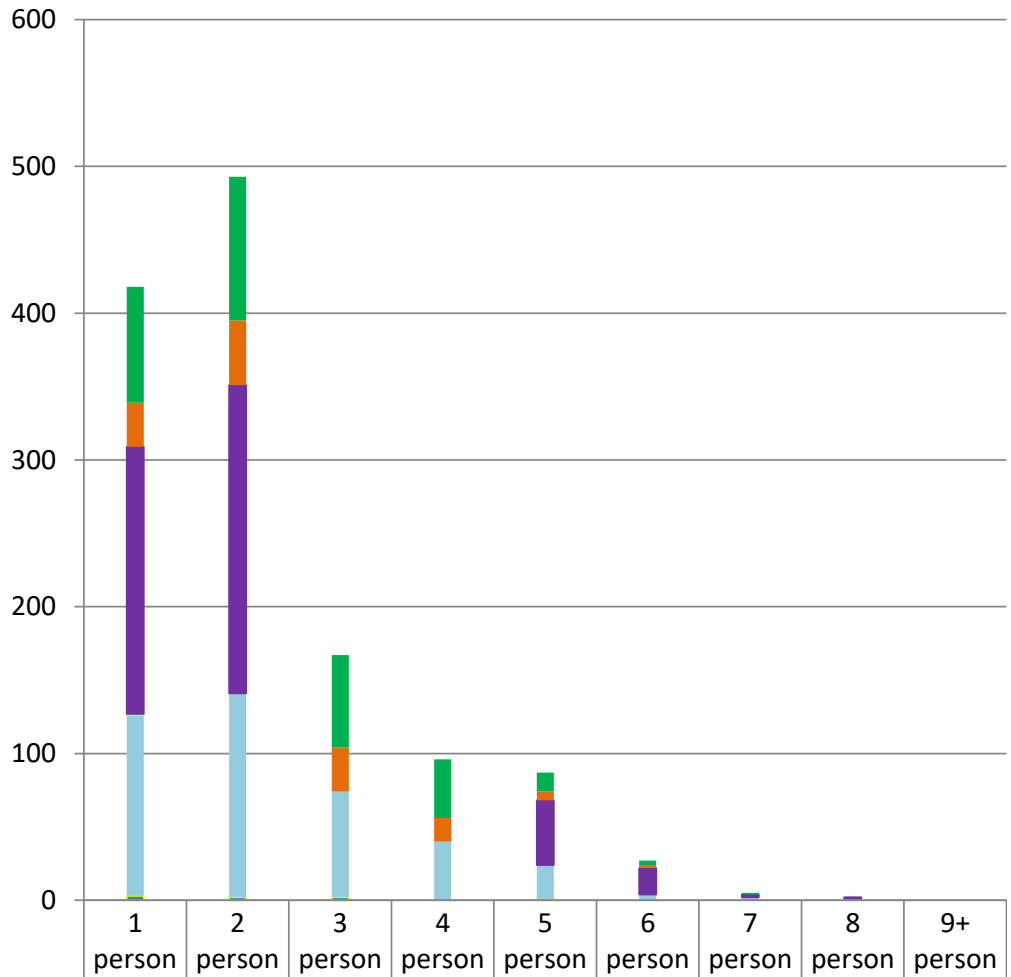
Applicant Reports



Applicant Reports

HHs "Currently Homeless" and 30% AMI and Employed, by HH Size

* or County, City, PMSA, or State

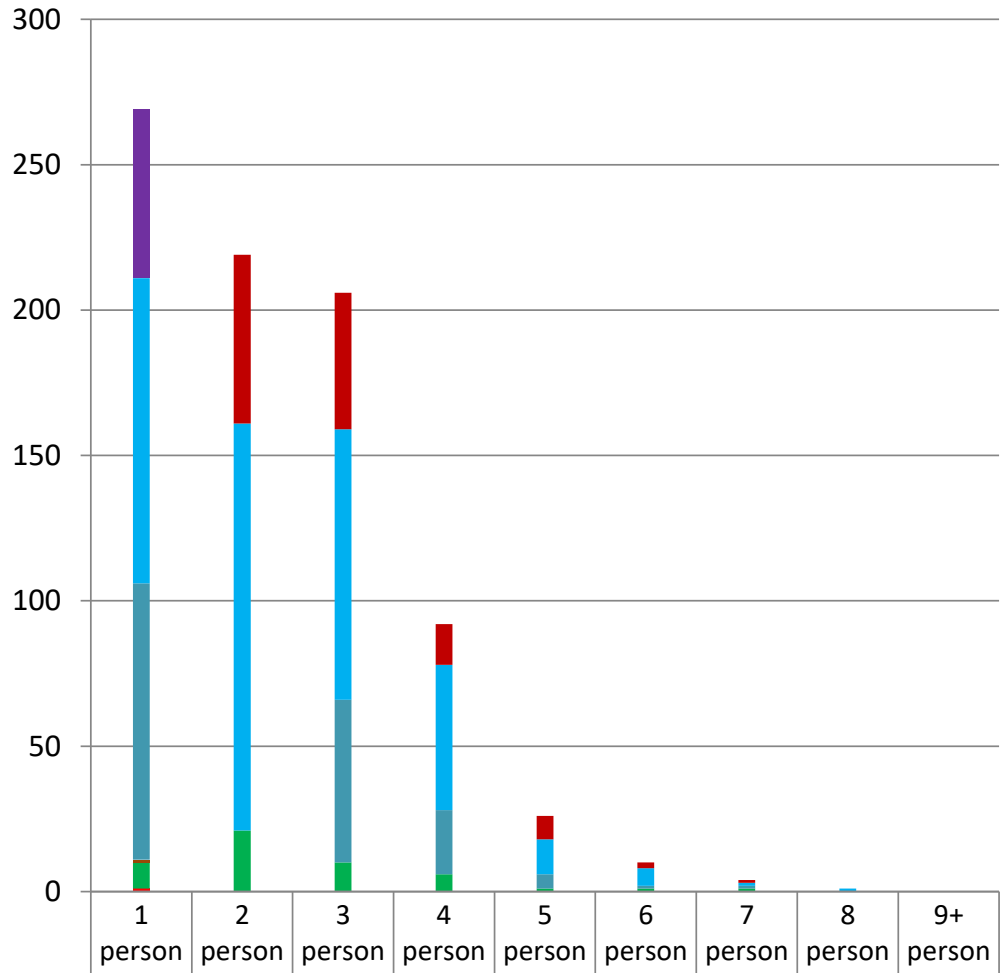


	1 person	2 person	3 person	4 person	5 person	6 person	7 person	8 person	9+ person
7: Status unknown	79	98	63	40	13	3	1	0	0
6: Stably Housed	30	44	30	16	6	2	0	0	0
5: At-Risk of Homelessness	182	210	0	0	44	18	2	1	0
2: Housing Loss in 14 Days	1	0	0	0	0	0	0	0	0
1: Homeless	123	139	72	40	23	4	2	1	0
4: Fleeing domestic violence	3	2	2	0	1	0	0	0	0
3: Homeless-other federal statutes	0	0	0	0	0	0	0	0	0

NARRATIVE: For an individual to be counted, it must have provided its income AND current housing status. Since current housing status has historically NOT been collected in waitlist softwares, the numbers here represent only a subset of the 52,000 plus households in the system. However, with each annual waitlist update, we now include this question, so the sample will increase in size fairly rapidly.

HHs "Currently Homeless" and 50% AMI and Employed, by HH Size

* or County, City, PMSA, or State

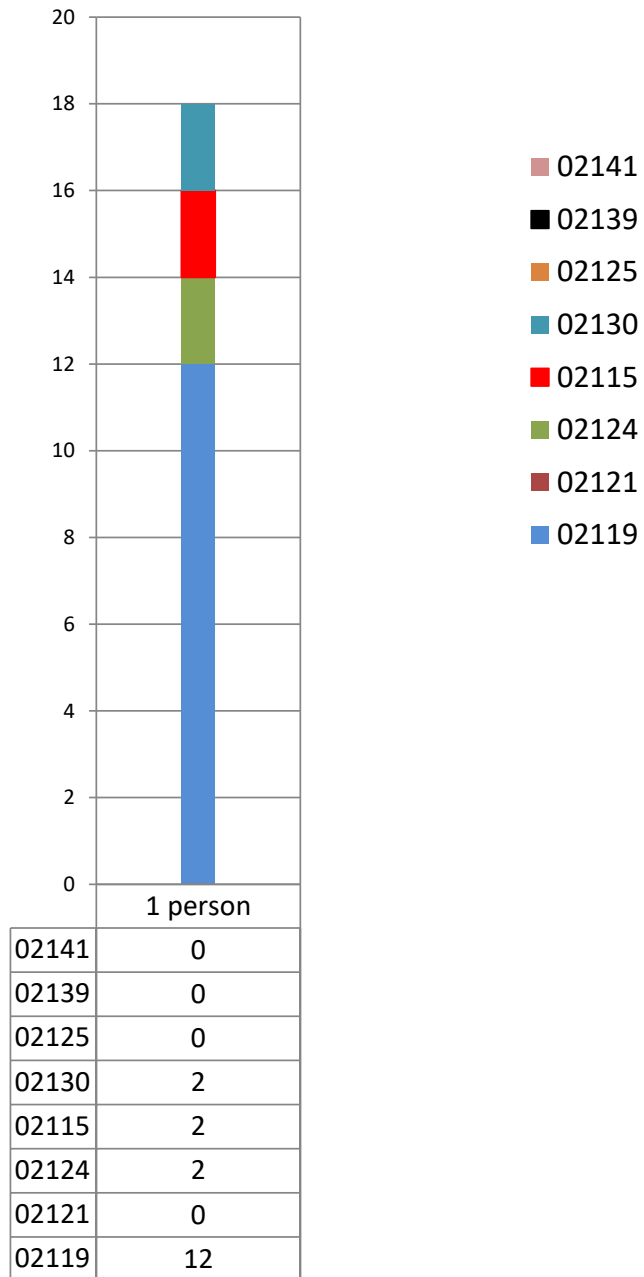


	1 person	2 person	3 person	4 person	5 person	6 person	7 person	8 person	9+ person
7: Status unknown	58	58	47	14	8	2	1	0	0
6: Stably Housed	105	140	93	50	12	6	1	1	0
5: At-Risk of Homelessness	95	0	56	22	5	1	1	0	0
2: Housing Loss in 14 Days	1	0	0	0	0	0	0	0	0
1: Homeless	9	21	10	6	1	1	1	0	0
4: Fleeing domestic violence	1	0	0	0	0	0	0	0	0
3: Homeless-other federal statutes	0	0	0	0	0	0	0	0	0

NARRATIVE: For a household of two or more to be counted, it must have provided its income AND current housing status. Since current housing status has historically NOT been collected in waitlists softwares, the numbers here represent only a subset of the 52,000 plus households in the system. However, with each annual waitlist update, we now include this question, so the sample will increase in size fairly rapidly.

HHs of 1 Person by Search Location (zip code)

* or County, City, PMSA, or State

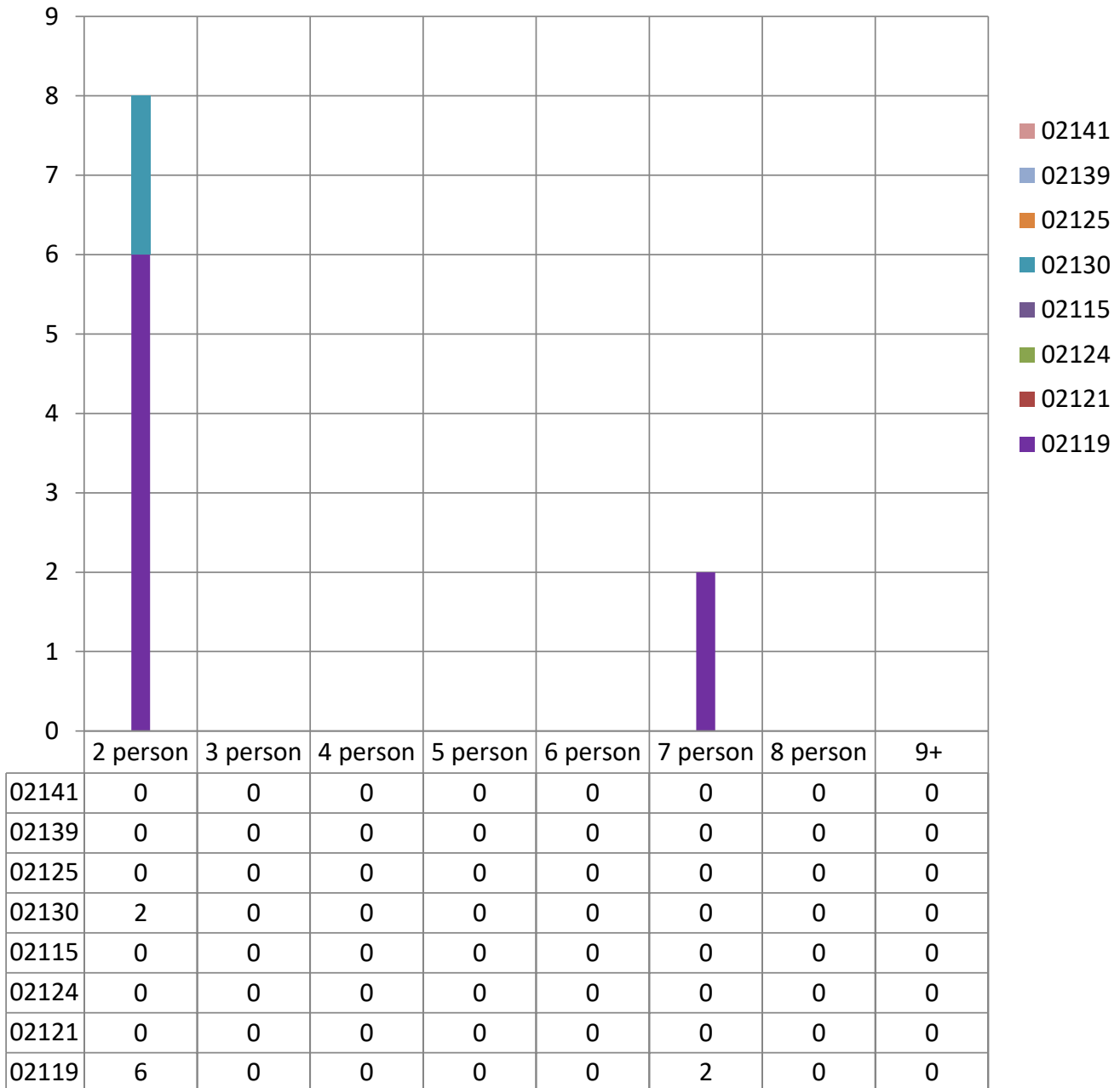


NARRATIVE: **Each household of Single People** is only counted once, on the basis of the zip code around which they center their search. This chart considers seven particular zip codes. As you can see, applicants seem to be searching near equally in these Roxbury, Dorchester, Boston, and Cambridge zip codes. The Fenway (02115) contain less affordable housing so naturally fewer people even try to search there.

HHS of 2 or more Persons by Search Location (zip code)

* or County, City, PMSA, or State

NOTE: Formulas and table values not yet set up on Applicants tab for 50% AMI clients



NARRATIVE: Each household of Two or More is only counted once, on the basis of the zip code around which they center their search. This chart considers seven particular zip codes. As you can see, applicants seem to be searching near equally in these Roxbury, Dorchester, Boston, and Cambridge zip codes.

Applicant Reports

Applicant Reports

